



**Increased risks
demand high performance**

SSAS ALERT ADVANCED

Increased piracy attacks and the threat of terrorist incidents have focused attention on the need for a reliable ship security alert system (SSAS).

Proven in service and trusted by the biggest names in the industry, Alert Advanced provides a complete and integrated SSAS platform to manage fleet security and respond to incidents, from your office, home or mobile.

Overview

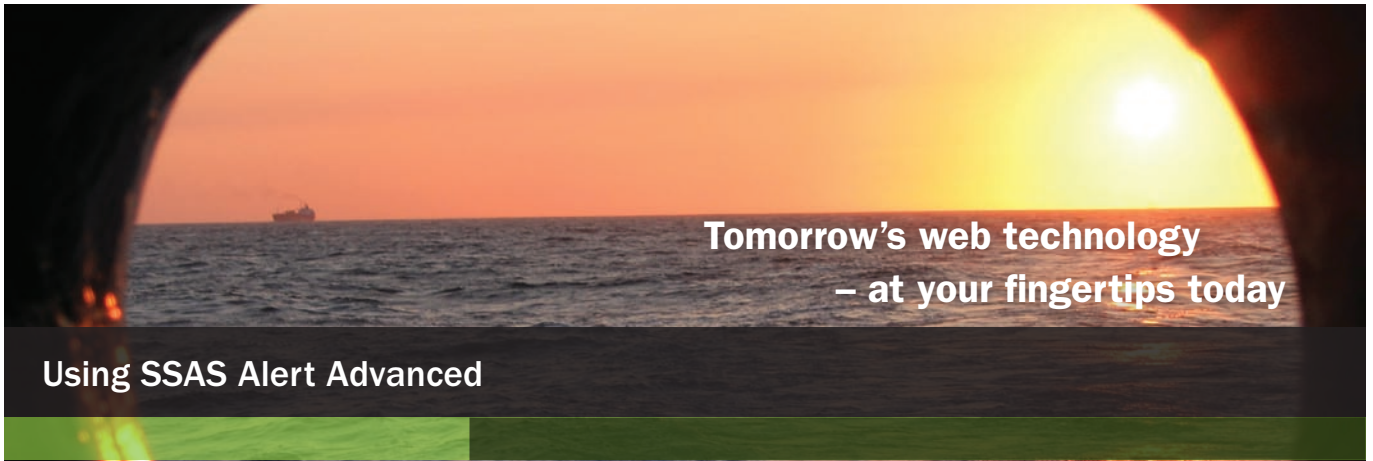
Rapid response is vital in a security situation. That is why Alert Advanced delivers decision-ready data, accessible from your home, office or mobile, wherever you are in the world.

Manage security across your entire fleet, in a single SOLAS compliant web based system, irrespective of the hardware installed onboard.

Combining real-time control of Security Alert distribution with secure password identification and HTTPs encryption, Alert Advanced ensures your sensitive data is secure and restricted to authorised personnel.

Key benefits

- Manage fleet security using a proven and reliable Ship Security Alert System
- Keep information secure by limiting access to the system via secure logins
- Control distribution of data to designated recipients
- Alert message delivery by - email, fax, SMS, telex
- Equipment tamper alarms
- Warning reports of low battery voltage
- Manage security on one system, supports Pole Star DSAS range and other manufacturers' SSAS units



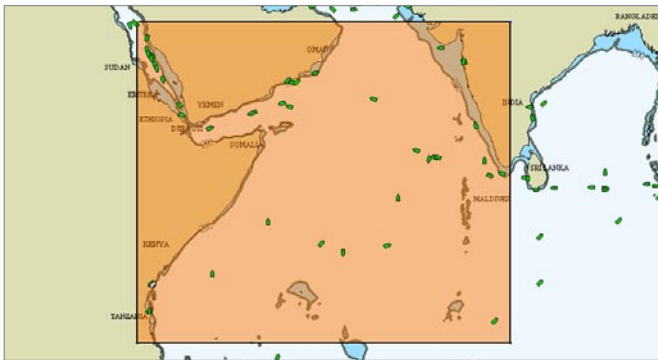
Tomorrow's web technology
– at your fingertips today

Using SSAS Alert Advanced

Alert Advanced offers ship-owners and managers an advanced and dedicated platform for managing fleet security. The system provides crews with a vital link to shore, and CSO's with real-time alerts and fleet visibility.

Integrated C-Map charts provide visibility, while advanced features – such as Industry Zones, geo-zone notifications and weather – support your risk management initiatives.

Control the distribution of ship-to-shore SSAS messages with easy online access. Create, delete or change message recipients and alter the message format to include a map, track history, forecast weather and ship particulars such as MMSI, Call Sign.



Alerts and their associated position reports are directed to the shoreside Pole Star information management system enabling users to monitor and manage security incidents, providing updated reports on position and other relevant data on a regular basis.

Respond to security situations faster with secure access from your desktop, via the password protected web application, or the Pole Star Alert mobile application for iPhone, BlackBerry and Android, to manage alerts on the go.

Easy setup

Alert Advanced is setup in three easy steps.

1. Account setup
2. Install Pole Star DSAS Mk2, or integrate existing third party SSAS hardware
- 3 Free on-site or remote training

Routine Security Monitoring

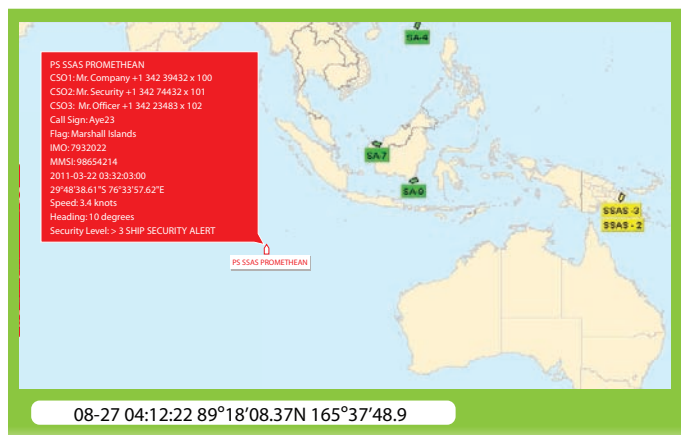
Monitor your fleet around the clock with Alert Advanced, the most sophisticated SSAS management system on the market. Alert Advanced offers industry-focused features designed to support your security monitoring procedures.

Visualise your fleet on full-screen maps and zoom in for detailed navigational information from C-Map.

Maintain situational awareness by displaying key Industry Zones on the map, such as UKMTO and War Risk Zones, or create customised geo-zones for your business.

Get notified by email or SMS whenever a vessel enters or exits a specified Zone, for 24-hour supervision.

Enhance efficiency with advance planning and analysis tools, such as weather forecast map overlays and historical data available to download on-demand.



08-27 04:12:22 89°18'08.37N 165°37'48.9

During a Security Incident

During a security alert, Alert Advanced provides you with essential situational awareness and decision-ready information.

When the crew hit the panic button, the SSAS message is transmitted via the reliable Alert Advanced system to your designated recipients by email or SMS. Add, edit and delete recipients instantly, via the secure web-based application, without the need for a technician to go onboard. Alerts are fully customisable and can include a map, track-history, forecast weather and ship particular.

In the event of a security situation, rapid response is vital. Fleet wide integration makes it possible to manage alerts in a single system irrespective of the make or manufacturer of the hardware installed aboard the vessel.

From: trail-mail@polestarglobal.com Sent: 20 April 2011 08:00
To: cso@fathom.com
Subject: SHIP SECURITY ALERT - Promethean Ocean

A position report has just been received from the vessel from Promethean Ocean.
Here is a map showing the history of position reports from 2011-04-17 07:49:21 until 2011-04-20 07:49:21.

	<table><tr><td>Asset name</td><td>Promethean Ocean</td></tr><tr><td>Asset type</td><td>Vessel</td></tr><tr><td>IMO number</td><td>3920125</td></tr><tr><td>CS01</td><td>Mr. Company +44 730 654 321</td></tr><tr><td>CS02</td><td>Mr. Security +44 730 353 342</td></tr><tr><td>CS03</td><td>Mr. Officer +44 730 234 543</td></tr><tr><td>Call Sign</td><td>CLA 21</td></tr><tr><td>Flag</td><td>Bangladesh</td></tr><tr><td>MMSI</td><td>9876543</td></tr><tr><td>Status code</td><td>Offline</td></tr><tr><td>Communicator model</td><td>PS DS-V1.8</td></tr><tr><td>Position date & time</td><td>2011-04-20 07:49:21</td></tr><tr><td>Latitude</td><td>6° 05' 08.00" N</td></tr><tr><td>Longitude</td><td>106° 48' 16.00" E</td></tr><tr><td>Speed</td><td>12.4 knots</td></tr><tr><td>Heading</td><td>25 degrees</td></tr><tr><td>Traffic status</td><td>Security alert</td></tr><tr><td>At least voltage</td><td>10.8 volts</td></tr><tr><td>Proximity direction</td><td>East</td></tr><tr><td>Proximity name</td><td>Tanjung Gerem</td></tr></table>	Asset name	Promethean Ocean	Asset type	Vessel	IMO number	3920125	CS01	Mr. Company +44 730 654 321	CS02	Mr. Security +44 730 353 342	CS03	Mr. Officer +44 730 234 543	Call Sign	CLA 21	Flag	Bangladesh	MMSI	9876543	Status code	Offline	Communicator model	PS DS-V1.8	Position date & time	2011-04-20 07:49:21	Latitude	6° 05' 08.00" N	Longitude	106° 48' 16.00" E	Speed	12.4 knots	Heading	25 degrees	Traffic status	Security alert	At least voltage	10.8 volts	Proximity direction	East	Proximity name	Tanjung Gerem
Asset name	Promethean Ocean																																								
Asset type	Vessel																																								
IMO number	3920125																																								
CS01	Mr. Company +44 730 654 321																																								
CS02	Mr. Security +44 730 353 342																																								
CS03	Mr. Officer +44 730 234 543																																								
Call Sign	CLA 21																																								
Flag	Bangladesh																																								
MMSI	9876543																																								
Status code	Offline																																								
Communicator model	PS DS-V1.8																																								
Position date & time	2011-04-20 07:49:21																																								
Latitude	6° 05' 08.00" N																																								
Longitude	106° 48' 16.00" E																																								
Speed	12.4 knots																																								
Heading	25 degrees																																								
Traffic status	Security alert																																								
At least voltage	10.8 volts																																								
Proximity direction	East																																								
Proximity name	Tanjung Gerem																																								

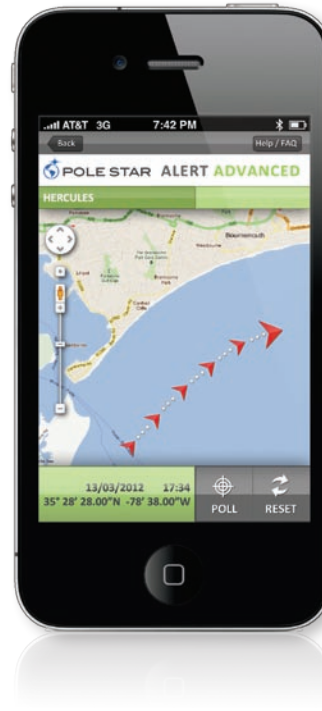
Controlling access to data

Alert Advanced is secure, HTTPs encrypted and password protected, to ensure that your sensitive data remains safe.

Limit the distribution of data with unique groups of recipients for security alerts, test alerts and standard position reports. Add, edit or remove recipients at any time, without the need for an onboard technician.

With additional user logins, you can give superintendants access to only the ships for which they are responsible. Add custom groups of vessels to logins, and assign full or view-only privileges on per vessel or per login basis, to restrict access to authorised personnel.

Mobile access



Because shipping is a 24-hour global business, Pole Star's market leading Ship Security Alert System is also available for iPhone, iPad, iPod touch, Android and BlackBerry devices. With the Pole Star Alert application, the CSO can manage fleet security remotely, wherever they are in the world. Three key features – view, poll and reset an alert – give the Company Security Officer immediate

situational awareness, as well as the tools necessary to manage the security situation.

Hardware options

For optimum performance, Pole Star recommends the use of its DSAS Mk2 hardware – a dedicated unit with integral battery to provide complete robustness and reliability. The Pole Star DSAS Mk2 is a self-contained SSAS unit combining an integrated IsatData Pro satellite transceiver, power management unit and back-up batteries which that will keep the unit fully functional for several days in the event of a power failure. The unit is linked to two separate external alert buttons but has no external antenna and so does not resemble typical satellite communications equipment.

Where SSAS hardware is already installed, other manufacturers hardware can be integrated with Pole Star's Alert Advanced service.

The following SSAS units can be integrated with the SSAS Alert Advanced service:

- Furuno Felcom 15/16 SSAS
- Satamatics Ocean Alert Mk I/II
- JRC JUE SSAS
- Thrane & Thrane SAILOR TT-3000SSA/6120 mini-C SSAS
- Nera Mini-C SSAS
- Transas Ship Guard v2/3

If your fleet employs a SSAS unit not listed here, please contact us to discuss your integration requirements.

FEATURE	DESCRIPTION
---------	-------------

HARDWARE OPTIONS

DSAS Mk2	Compact, integrated IsatData Pro transceiver, constructed using a tough polycarbonate enclosure and protected by a stainless steel casing with power management unit, back-up batteries and two alert activation points
Third party equipment	Compatible hardware includes: Thrane & Thrane TT-3000SSA, Furuno Felcom 15/16, JRC JUE SSAS, Nera Mini-C SSAS, Satamatics Ocean Alert, Transas Ship Guard

POSITION REPORTING*

Automatic Position Report (APR)	At user-defined intervals up to every 15 minutes
Security Alert Position Report (SPR)	Unlimited SPRs for real security alerts and routine testing
Warning Position Report (DSAS Mk2 and DSAS only)	Receive notifications of power/battery status and hardware tampering
Change reporting frequency	Send command to change the reporting interval
Poll for position	Send command to request an immediate position report
Report history	View and download a log of all reports

FLEET INFORMATION

Fleet list	View latest report data for entire fleet
Fleet map	View position and status of entire fleet at a glance on C-Map charts
Vessel map	View position history trail and status of an individual vessel on C-Map charts
Meteorological information	12 hour to 10 day meteorological forecast and cyclone/storm/hurricane information

TOOLS

Notifications	Program system to transmit reports to recipients via email/SMS/fax/telex
Postings	Add/edit data displayed in position reports
Manage alerts	Manage and reset real security alerts and test alerts from your pc/mobile device
Zones	Display pre-defined industry zones, create and show user defined zones
Zone notifications	Receive notification when vessels report position in or out of any zone
Overdue position reports	Receive notification if vessel has not reported on schedule
Amver notifications	Automated position reporting to Amver
Remote SSAS management	SSAS testing and reset via authorised email command (DSAS Mk2, DSAS & some third party equipment)

SECURITY

Master password	Full access and control of Alert Advanced
Assistant password	Limited access and control of Alert Advanced
View password	Read only access to Alert Advanced

HELP

Support	Full technical and customer support
---------	-------------------------------------

* Pole Star will use reasonable endeavours to track your transceiver and deliver your position reports. However, sometimes this is not possible due to factors beyond our control, such as satellite communications failure.